

2010 New Year Fine Art Print Festival



2010.1.23~3.23

Organizer: www.ChinaPrintArt.cn

Festival Alliance Galleries: **Amelie Gallery, Ku Gallery, La Plantation Art Center, onemoon Gallery, Yun Gallery** (*Alphabetical Order*)

Sponsored by CANSON, Visual Factory

The Third Annual **New Year Fine Art Print Festival (2010 FAPF)** will blossom once again during the 2010 New Year. Print art reflects the changing aesthetic tastes of the times, and is a bridge that spans the distance between contemporary art and the public. Art events geared towards “affordability” are all the rage in this era of recession, and they also provide a platform for cutting edge experimentation by young artists. At **2010 FAPF**, where artworks are all priced below 50K RMB, classics by the masters stand side by side with the unique innovations of rising talents, bringing more value in terms of academic importance.

2010 FAPF brings galleries together to use printmaking to expand awareness about contemporary art and to expand its market base. This collaboration is a testament to their faith in the future of the art industry after the financial crisis. The Festival is hosted by **China Print Art Online**(www.ChinaPrintArt.cn), and is a collaboration between **Amelie Gallery, Ku Gallery, La Plantation Art Center, onemoon Gallery** and **Yun Gallery**, who have partnered up to bring together the freshest innovation in fine art print for this year’s festival.

The recent etchings of *Tan Ping* (**Yun Gallery**), the famous printmaker from the *China Central Academy of Fine Arts*, represents the confluence of East and West in copper engraving: in his artistic transformation, copper engraving was definitive. Nearly twenty years ago, a chance oversight left one of his copper plates in the acid for four hours too long, and the fragmented, blurred visual language that resulted inspired *Tan Ping*’s famous abstract painting. *Huang Kai* (**Amelie Gallery**), carries on the traditions of Chinese panel comics, from the famous pre-revolution comic book, *The Adventures of Sanmao the Orphan*, the comic drawings of *Feng Zikai* and on to the early revolution period. With mischief and playfulness, he explores the disparity between memory and reality. His “reminiscences on childhood” mix bitter sadness with sweet joy. The solo exhibitions of Huang and Tan reflect printmaking’s effect as a conceptual catalyst for contemporary artistic exploration. The academic elites at **Ku Gallery** use their superlative skills to express Chinese perceptivity and spiritual individuality. *Zhang Guilin* is the founder of the silkscreen studio at the *China Central Academy of Fine Art*. The best print artists from the *Tianjin Academy* are also represented here in full force. *Fan Min*’s mix of extravagant black copper engraving and digital printing create a profound imaginative space. The works of *Kou Jianguhui*, who returned from Belgium, are witty and free-spirited. As a promoter of cultural

exchange between China and France, **La Plantation Art Center** will be featuring the works of three female artists from France and China. The varying experiences and backgrounds of these women are reflected in their personal way to present several “traces of life”. Their works form a magically diverse soliloquy. **onemoon** features etching in *2010 FAPF*. The exhibit, curated by onemoon Art Director and printmaker, *Zhang Chunbo*, shows the versatility of expression and techniques that etching offers printmakers. Young, mid-career and mature printmakers, all trained at *Central Academy of Fine Arts*, embrace traditional and innovative subjects and skills. The exhibition offers visitors the opportunity to see and understand a broad range of etchings to help them appreciate this art form.

CANSON, the world famous French art paper brand, has enthusiastically agrees to support the **2010 FAPF**. **CANSON**'s paper is the first choice for leading printmaking artists around the world. At Amelie Gallery, located in the 798 Art District, visitors can experience **Red Sphere Art** (www.redsphereart.com), the new online 3D virtual museum rendered by **Visual Factory** (www.visualfactory.com.sg) in Singapore. Also, at this year's festival, we hope that the number of visitors joining us in making their own prints will surpass our previous record of nearly one thousand people.

This November in USA, as the *International Print Fair* wrapped up its largest run ever, major institutions like the *Museum of Modern Art* were taking part in simultaneous *New York Fine Art Print Week*. The organizer, the *International Fine Print Dealer's Association*, has 165 professional members scattered across the western hemisphere. While the mature markets of the West are impressive in scale, the potential of China's print art market is enormous. The continuous increase in transactions at previous editions of **New Year Fine Art Print Festival** is a testament to the trend of specialization among local collectors in China. The desire for original art, professional appreciation of printmaking art and the passion for collecting it are growing, and the fine art print, with its enchanting cultural appeal, is playing an important role in China's increasingly refined tastes.

Jessica Zhang,

Director of 2010 New Year Fine Art Print Festival

Media contact: +86 010 5978 9698/13661054122

2010 FAPF Exhibitions List:



Amelie Gallery

HuTong Play-Huang Kai Solo Show

2010.01.23~03.15

Opening: 01.23 15:00 PM

Add: 798 Art District, No.2 Jiu Xianqiao Rd.

+86 010 5978 9698



Ku Gallery

Fine Art Prints Joint Exhibition

2010.01.23~03.05

Opening: 01.23 15:00 PM

Artists: Zhang Guilin, Fan Min, Zhu Yanchun, Wen Zhongyan, Zhang Lian, Kou Jianghui, Mi Jie, Li Junliang, Guo Jianwen, Zhao Yongkang, Zhang Wan, Zhao Jinxiu, Wei Xiao

Add: Daku Art Center, 798 Art District, No.2 Jiu Xianqiao Rd.

+86 010 5978 9202



La Plantation Art Center

Traces of Life

2010.01.24~03.21

Opening: 01.24, 15:00 PM

Artists: Zhang Donghong(China), Annick Gaston(France), Sophie Paoli(France)

Add: D Area, Art Base One, Hegezhuang village, Cuigezhuang Township, Chaoyang Dist.

+86 10 64336920/13



onemoon Gallery

SCRATCH, BITE, PERFECT- The Versatility of Etching

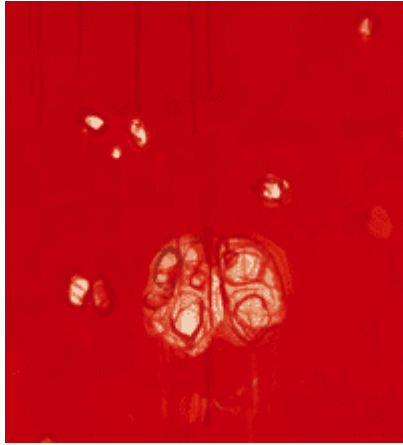
2010. 02.06 ~ 03.30

Opening: 02.06 15:00 PM

Artists: Tan Ping, Yang Yue, Li Xiaolin, Wu Xuefu, Zhang Chunbo, Dong Huiping, Liu Wentao, Zhang Fan, Qin Guanwei, Miao Guohua, Zhang Yifan, Zhang Zan, Li Chang, Li Rongming, Anne Ullrich

Add: Inside Ditan Park South Gate, Dong Cheng Dist.

+86 10 64277748



Yun Gallery

Tan Ping's New Etchings

2010.01.23~03.23

Opening: 01.23 15:00 PM

Add: 3818 Warehouse, 798 Art District, No.2 Jiu Xianqiao Rd.

+86 010 84599329